



GEA Farm Technologies

HD Headlocks

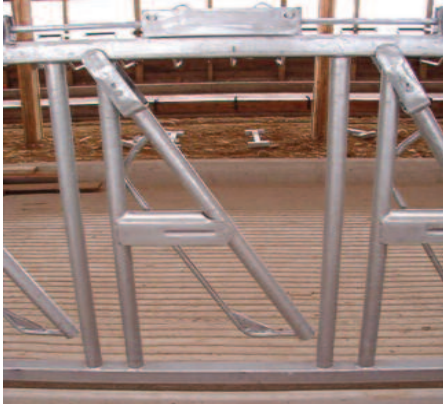
Durable and cow friendly...
Functional and rugged design

- Positive locking and heavy duty galvanized construction.
- Automatic down cow release.
- 17" Wide opening.

GEA Farm Equipment | [Norbc](#)

GEA Farm Technologies - The right choice.

Heavy Duty Construction



- High tensile 2" square tube frame.
- Swing Arm bushings are standard.
- All hot dipped galvanized construction.

Positive Locking System



- In "lock up" position, cows are positively locked in place
- Latch is mounted on the frame for long life.
- D-ring lifter allows safe and easy release of individual while others are retained.
- Solid 5/8" steel control rod.
- Latch Guard included.

Automatic Down Cow Feature



- "Down and out" feature allows 17" wide opening for removing down cows.

Cow Friendly

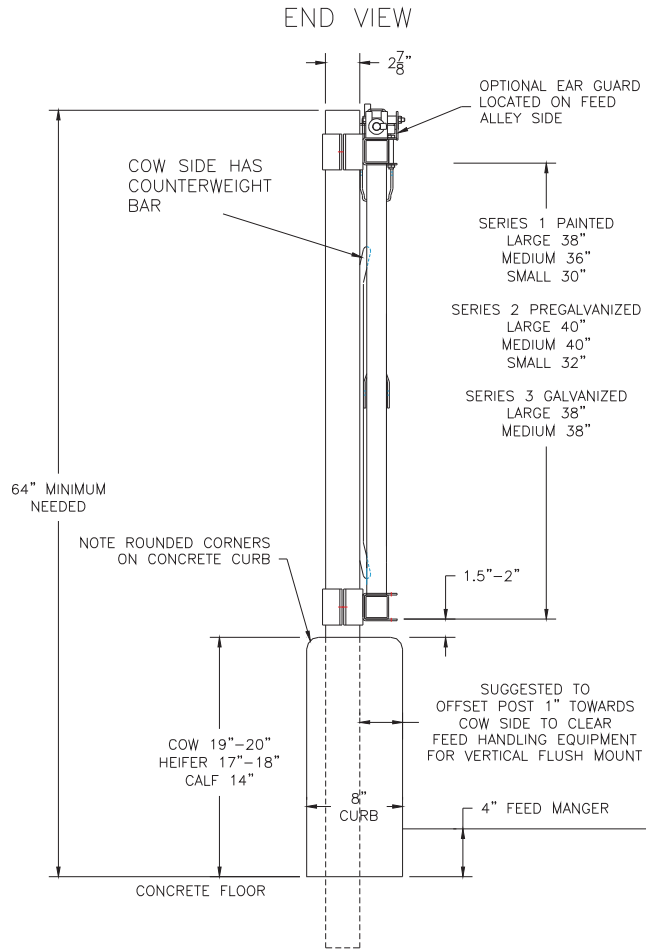
- 17" wide opening allows friendly entrance.
- Rubber bumper reduces noise.

Model	Animal Size	Length	# of Locks	Neck Size
L-8-4	Large (900 lb or over)	8 ft	4	7 ½"
L-10-4	Large (900 lb or over)	10 ft	4	7 ½"
L-10-5	Large (900 lb or over)	10 ft	5	7 ½"
L-12-6	Large (900 lb or over)	12 ft	6	7 ½"
M-8-5	Medium (400 to 900 lb)	8 ft	5	6" or 7"
M-10-6	Medium (400 to 900 lb)	10 ft	6	6" or 7"
M-12-7	Medium (400 to 900 lb)	12 ft	7	6" or 7"
S-8-5	Small (Up to 500 lb)	8 ft	5	5 ½"
S-10-7	Small (Up to 500 lb)	10 ft	7	5 ½"
S-12-8	Small (Up to 500 lb)	12 ft	8	5 ½"
S-10-8	Small (Up to 250 lb)	10	8	5"

Suggested Mounting Dimensions

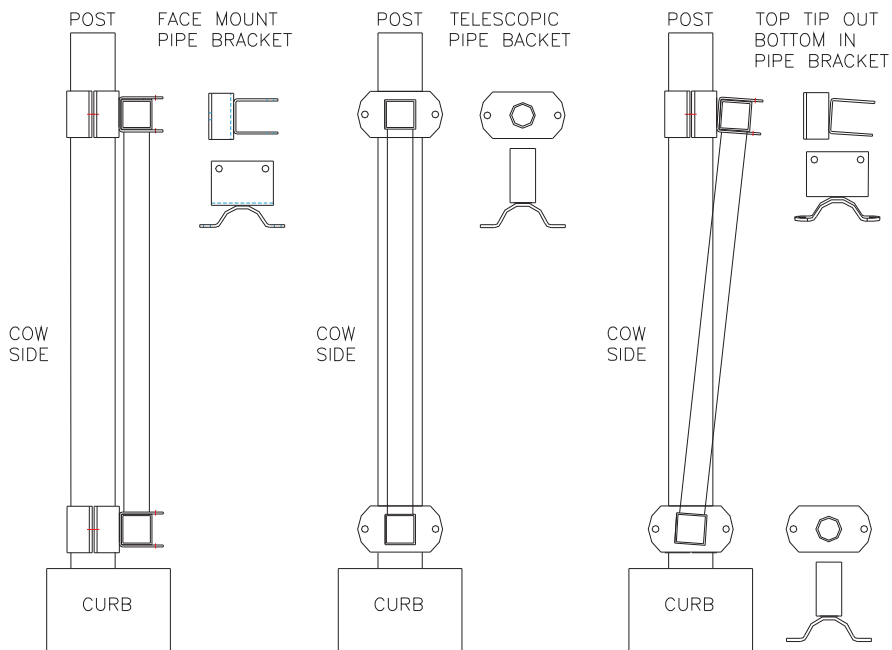


Heifer and calf sizes available



TYPICAL SUGGESTED 2 1/2" SCHEDULE 40 POST SURFACE MOUNT LAYOUT

Mounting Options Shown on 2 7/8" O.D. Schedule 40 Pipe



GEA Farm Technologies

The right choice.



GEA Farm Technologies

GEA Farm Technologies, Inc.

4754 State Route 233, Westmoreland, NY 13490 USA
Tel: 315.853.3936
www.norbco.com

20903 W. Gale Avenue, Galesville, WI 54630 USA
Tel: 608.582.3081
www.norbco.com

2500 E Tulare Avenue, Tulare, CA 93274 USA
Tel: 559.686.7835
www.norbco.com